

# MCAHRMM

*Association for Healthcare Resource & Materials Management*



Advancing the Healthcare Supply Chain  
[www.MCAHRMM.com](http://www.MCAHRMM.com)

**MINNESOTA CHAPTER  
OF AHRMM**

**NOVEMBER 5TH... NETWORKING  
EVENT AT URBAN GROWLER 6PM**

**NOVEMBER 6TH... FULL DAY  
CONFERENCE AT U OF M, ST. PAUL**

MCAHRMM wanted to bring the 2015 AHRMM recap to you! We are having a 2015 AHRMM Board member present a recap of the conference, along with a Owen's and Minor and Sanford joint session that was presented at National.

We know it is the hunting opener, but please consider attending this event..

**In this Issue...**



**Page One**

**MCAHRMM is a 2015 AHRMM  
Diamond Chapter!**

**Page Two & Three**

**Fall Conference Update!  
November 6th at the  
U of M St. Paul Campus**

**CEU's Available!**

**Page Four**

**AHRMM News, Local News and  
Region Map**

**Page Five**

**2015 Board of Directors**

**[www.MCAHRMM.com](http://www.MCAHRMM.com)**

# Fall Conference Update:

**NOVEMBER 6TH 2015**

**University of Minnesota**

**Continuing Education & Conference Center**

**1890 Buford Avenue St. Paul, MN 55108**

**7:30am -3:00pm**

MCAHRMM's Fall conference for Supply Chain Professionals and their vendor partners, join together for great networking, Speakers hand picked from all over the country, educational sessions focusing on current issues in healthcare.

We will have a member from National AHRMM speaking and also providing a recap on the 2015 AHRMM National Conference. (See the next page for a session breakdown)

Thinking about taking your CMRP exam? Remember when you are registering to sign up for our 'CMRP Study Session' lead by some of your peers that are CMRP's helping you have a successful test.

**NOVEMBER 5TH 2015**

**Urban Growler Networking Event**

**2325 Endicott Street**

**St. Paul, MN 55114**

**Cost \$10.00 Food & Drink included**

**6:00pm -9:00pm**

## Register NOW !!!!!

**WHAT:** MCAHRMM's Fall Conference

**WHO:** All Members are welcome. Non members are also welcome for a \$75.00 fee. (Heck, for that you might as well just join MCAHRMM!)

**DATES** November 6th, 2015

**WHERE:** St. Paul, MN

Go to [www.MCAHRMM.com](http://www.MCAHRMM.com) for the electronic to register for the conference or to renew your membership.

**VENDOR SPONSOR INFORMATION...**

## CALLING 10 VENDORS...

MCAHRMM's Fall Conference is a fantastic way to network in an intimate setting with a Supply Chain healthcare professionals from all over Minnesota.

We are mixing up our vendor sponsorship for this One Day Conference.

**NOVEMBER 5th:** Urban Growler. 6-9pm. Unless you are a 2015 paid member, Only the vendors that are apart of this conference can attend. This will be the networking social.

**NOVEMBER 6th:** U of M Continuing Education and Conference Center. 7:30am-3:00pm. We are going to set up 10 table around the Conference room (**Please only bring literature or products that only fit on a table**) and the tables will be set up all day. This will allow for networking opportunities throughout the conference.

**WHO:** Any vendor that wants to promote their product or service to Supply Chain professionals in various facets of healthcare.

**DATE & TIME:** November 5th & November 6th

**INVESTMENT:** \$300.00 per 8'x10' table and Networking event sponsorship.

Contact Andrea Scofield (Vendor Fair Organizer) for more information, to register or sponsorship opportunities.

**Phone:** 651-734-6623

**Email:** [ascfield@mwsurgerycenter.com](mailto:ascfield@mwsurgerycenter.com)

# Take a Peek at the Schedule...

## November 5th

6:00pm-9:00pm

**Networking Event at the Urban Growler in St. Paul. \$10.00 Cover Charge.**

**Food and Beer provided.**



urban  
Growler

## November 6th

7:30am-8:30pm

**Registration and Continental Breakfast.**

8:30am-8:45am

**Welcome**

8:45am-10:15am

**Strategically Partnering with Your Logistics Provider**

**Presented by: Jason Wilson, Sanford Health and Jordan Herbert, Supply Chain Performance Supervisor Midwest Transformation Team Owens & Minor**

Evaluate Sanford Health's request of their logistics partner... to jointly establish a streamlined logistics network with self distribution like provider control that leverages the investments, infrastructure, and scale of a partner. Review the steps taken to evolve the previously transactional cost plus relationship with Owens & Minor into a partnership of transparency, trust, and mutually aligned incentives. Access success at creating a thoughtfully designed pricing model that mitigated competing interests that is scalable for growth and complexity. Gauge the outcome/progress of the first year of the new relationship on meeting objectives of total cost reduction, improved service levels, and shared operational efficiency.

10:15am-10:30am

**Break**

10:30am-11:30am

**AHRMM Board of Directors Representative.**

A Member of the 2015 AHRMM BOD will be onsite to discuss the CQO movement and current topics in Supply Chain

11:30am-1:00pm

**Lunch and Networking with Vendor Partners**

1:00pm-1:30pm

**Panel Discussion**

Panel discussion with various Supply Chain Professional's in the area. Interactive dialog of what current barriers all organizations are facing in today's healthcare marketplace.

1:30pm-1:45pm

**Break**

1:45pm-3:00pm

**Medical Cannabis Discussion**

**Presented by: Colin Kelley, CFO & SVP of Development of LeafLine Labs**

On July 1st Leafline Labs became a pioneer in Minnesota as being one of two manufacturers able to provide medical cannabis per the Department of Health. Colin Kelly will outline the process Leafline labs has gone through and what this new territory means for healthcare workers. This session will allow time for questions and how you may be impacted in your daily roles. Please submit questions ahead time with your registration. The goal of this session is to be interactive.

3:00-4:00pm

Certified Materials Resource Professional (CMRP) Overview

*During this session you will gain insight into the exam content and techniques will be provided that may be helpful as you study for the exam. YOU MUST REGISTER for this session.*

## AHRMM News:

**MCAHRMM 2016 BOD  
TO BE ANNOUNCED!...**

**Get Involved Locally.** The MCAHRMM Board of directors work year round to keep our chapter growing and vibrant. We need volunteers to get involved on Committees and open board positions. Please consider getting involved.

Visit [www.ahrmm.org](http://www.ahrmm.org) for other National News

## Local News:

**REGISTER FOR  
THE FALL  
CONFERENCE!**

**AT**

**[www.MCAHRMM.com](http://www.MCAHRMM.com)!**

What Region are you in? Who is your Region Representative?

### **Region #3 Mike Hoffmann**

Region #3  
Sandford - Bemidji  
218-333-5371

[michael.hoffmann@sanfordhealth.org](mailto:michael.hoffmann@sanfordhealth.org)

**Area Code: 218**

**Region #2  
Joanne Nei**  
Region #2  
CentraCare HealthSystem

**Area Code: 320**

**Region #1  
Ryan Goergen**

Region #1  
Winona Health

**Area Code: 507**

## MCAHRMM



### **At Large Patrick Marier**

Member at Large  
Amerinet  
763-208-8832

[Patrick.Marier@amerinet-gpo.com](mailto:Patrick.Marier@amerinet-gpo.com)

\*If you are a member not in a listed area code, or even out of MN..Your rep is the Member at Large.

### **Region #4 Laurel Sampson**

Region #4  
VHA

**Area Codes: 952, 612, 651,  
763**

## REGIONS



# MCAHRMM



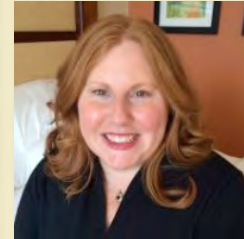
**Jerry Holm**  
President  
Children's Hospitals and Clinics  
of Minnesota  
612-813-5845  
[jerry.holm@childrensmn.org](mailto:jerry.holm@childrensmn.org)



**Kelly Wagner**  
Past President & Conference  
Chair  
CENTiCARE  
CORPORATION  
1-800-433-0348  
[kelly@centicare.com](mailto:kelly@centicare.com)



**Mrs. Andrea Scofield**  
President Elect  
Midwest Surgery Center  
651-734-6623  
[ascfield@mwsurgerycenter.com](mailto:ascfield@mwsurgerycenter.com)



**Tricia Weisz**  
Treasurer  
HealthEast Care System  
651-232-1075  
[taweisz@healtheast.org](mailto:taweisz@healtheast.org)



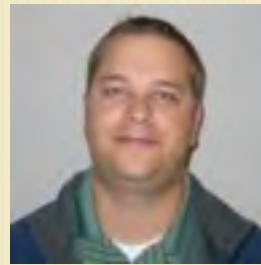
**Ronda Barthel**  
Secretary  
attainia  
[ronda.barthel@attainia.com](mailto:ronda.barthel@attainia.com)



**Ryan Goergen**  
Region #1  
Winona Health  
507-457-4354  
[rgoergen@winonahealth.org](mailto:rgoergen@winonahealth.org)



**Joanne Nei**  
Region #2  
CentraCare Health System  
320-255-5753  
[nejj@centracare.com](mailto:nejj@centracare.com)



**Mike Hoffmann**  
Region #3  
Sanford - Bemidji  
218-333-5371  
[michael.hoffmann@sanfordhealth.org](mailto:michael.hoffmann@sanfordhealth.org)



**Laurel Sampson**  
Region #4  
VHA



**Patrick Marier**  
Member at Large  
Amerinet  
763-208-8832  
[Patrick.Marier@amerinet-gpo.com](mailto:Patrick.Marier@amerinet-gpo.com)



**Michael Schmidt**  
Co-Vendor  
UHS



**Steve Sullivan**  
Co-Vendor  
Fairview Health Services

## 2015 Board of Directors

---